

faith

BIBLE SEMINARY

*Biblical Education
for Effective
Christian Ministry*



FBS Student Catalog

faith

BIBLE SEMINARY

2000 Elmwood Avenue

Lafayette, IN 47904



Table of Contents

1.0 About Faith Bible Seminary	8
1.1 History.....	8
1.2 Governance	9
1.3 Catalog Purpose	9
2.0 Core Mission.....	10
2.1 FBS Mission Statement.....	10
2.2 FBS Educational Objectives	10
3.0 Doctrinal Statement	11
4.0 Accreditation.....	17
5.0 Admissions.....	18
5.1 Non-Discrimination Policy	18
5.1 Transfer Students, Advanced Standing and Transfer Credits	18
6.0 Financial Information.....	20
6.1 Master of Divinity Program Costs	20
6.2 Master of Arts in Biblical Counseling Program Costs.....	21
6.3 Payment Plans	21
6.4 Failure to Meet Payments	21
6.5 Special Circumstances	22

7.0 Academic Information	24
7.1 FBS’s Student Information System and Online Learning Software	24
7.2 Academic Progress.....	24
7.3 Unsatisfactory Academic Progress	25
7.4 Full time Student Definition	25
7.5 Attendance	25
7.6 Withdrawal.....	26
7.7 Learning Resources	26
7.8 Incomplete Classes.....	27
7.9 Distance Education and Independent Study Classes	27
8.0 Seminary Adjunct Faculty	28
9.0 Master of Divinity.....	35
9.1 Overview.....	35
9.2 M.Div. Curriculum.....	37
9.3 Class Scheduling	46
9.4 The Unique Paradigm of FBS’s M.Div.	47
9.5 Curricular Practical Training (CPT)	48
9.6 Potential Students.....	50
9.7 Local Church Partnering	53
9.8 Admissions.....	58
9.9 M.Div. Graduation Requirements.....	61

10.0 M. A. in Biblical Counseling	62
10.1 Admissions.....	65
10.2 MABC Graduation Requirements.....	67
10.3 MABC Curriculum	68
10.4 Delivery System.....	74
10.5 Class Scheduling.....	77
Appendix 1: Organizational Chart	86
Appendix 2: FBS Grievance Policy	87

Disclaimer:

This catalog represents the most accurate information at the time of posting. FBS reserves the right to adjust in policies, procedures, costs, curriculum, faculty, etc. as needed to best accomplish its mission.

Please call to verify any information that you need to make informed decisions.

Revised 08-2022

1.0 About Faith Bible Seminary

1.1 History

The congregation of Faith Church (FC) has been committed to equipping men and women for effective Christian ministry since its birth in 1964. This commitment extends to equipping men for pastoral ministry. FC has trained numerous pastoral interns.. These men were sent out for vocational ministry around the world. By the grace of God, FC became known for its emphasis on the sufficiency of Scripture and biblical counseling. Faith Biblical Counseling Ministries, a ministry of FC, has trained over 15,000 men and women in biblical counseling through its Biblical Counseling Training Conference and basic training courses.



In 2002 the congregation of FC developed an initiative for a church-based seminary as part of its five-year strategic plan. The congregation believed that a church-based seminary was a natural extension of what God had allowed FC to do throughout its history.

Furthermore, the congregation of FC wanted to begin Faith Bible Seminary (FBS) to address some growing concerns with the current seminary model. There were three particular needs that the congregation desired to address: cost, time, and ministry experience.

- First, the cost of seminary quickly outpaced the ability of most seminarians to graduate debt-free. In addition, many seminarians worked full-time which made being a husband and father or wife and mother particularly challenging. Thus, many seminarians left school with family challenges needing attention and indebtedness that potentially limited ministry opportunities.
- Second, many students faced the challenge of not finishing their degrees within 3–4 years due, in part, to the high cost and the associated full-time work.
- Third, many students did not sufficiently engage in practical ministry during their seminary experience which hindered their preparedness for future ministry.

To meet these needs, FBS was established in 2005 by FC as a limited liability corporation. FBS began in the fall of 2007 by offering a Master of Divinity degree. FBS graduated its first Master of Divinity class in 2010 with eleven graduates.

In 2007, the church decided to expand the potential influence of FBS through a Master of Arts in Biblical Counseling degree. The new program began in the summer of 2008. In 2011, FBS graduated eleven MABC students. For up-to- date graduation statistics please see the FBS web link—<http://www.faithlafayette.org/fbsstats>.

1.2 Governance

In 2011, the FBS board made the decision to transition from an LLC to a 501c3 non-profit organization. The Internal Revenue Service granted 501c3 status to FBS in 2014. The seminary is governed by the president who is accountable to a board of directors. FBS undergoes a full financial audit each year. Organizational documents and audit reports are available upon request. The seminary organizational structure is given in Appendix 1.

1.3 Catalog Purpose

While every effort is made to ensure the accuracy of this catalog, it does not serve as an irrevocable contract between the seminary and current or prospective students. Catalog changes are made according to specific policies and procedures which protect both the seminary and the student. Graduation requirements, if changed, will not be made retroactively unless it is to the student's advantage.

2.0 Core Mission

2.1 FBS Mission Statement

Faith Bible Seminary is a graduate-level training institution designed to glorify God by equipping students with a **biblical education for effective Christian ministry**. In light of this mission statement, completion of the FBS curriculum will result in:

2.2 FBS Educational Objectives

Understanding the Sufficient Scriptures: FBS students will demonstrate a whole-hearted and exclusive commitment to the Scriptures. This commitment is displayed through the student's acquisition of the necessary exegetical tools for a productive life-long study and communication of God's Word, the development of sound doctrinal convictions, and the development of skills necessary to minister the Word of God effectively.



Enhanced Academic Ability: Students will expand critical thinking skills, understanding of relevant subject matter, and the ability to evaluate reference works in order to clearly communicate truth to themselves and others.

Spiritual Growth: Students will leave FBS with a more meaningful relationship with Christ. They will display this relationship in both their growing godly character and their service.

Valuing Relationships: FBS will facilitate godly relationships within the student body for the purpose of encouragement and exhortation. Students will develop a commitment to facilitating godly relationships in their future ministries.

Preparation for Service: FBS students will learn to boldly engage in biblically based Christian ministries to build the body of Christ around the world through the development of leadership, discipleship, counseling, and community outreach skills.

Based on the mission statement and educational objectives, the vision of FBS is to become a model of “biblical education for effective Christian ministry” around the world.

3.0 Doctrinal Statement

These articles of faith do not exhaust the extent of our beliefs. The Bible itself, as the inspired and infallible Word of God that speaks with final authority concerning truth, morality, and the proper conduct of mankind, is the sole and final source of all that we believe.

The Scriptures

We believe that the Holy Bible as originally written was verbally inspired and the product of God through Spirit-controlled men and thus is sufficient for all doctrine, faith, and practice. Inspiration ensures the historicity of the Bible including the creation account in Genesis whereby God created the universe in six days, a literal Adam and Eve as the parents of all mankind, a literal fall, and a universal flood. We believe that the canon of Scripture, consisting of the sixty-six books of the Bible is God's completed revelation to man for this age.

God

We believe that there is only one living and true God who is the Creator and Sustainer of the universe and the Giver and Sustainer of life. The Holy Scriptures, creation, and the conscience of man testify to the existence of God. We believe that God is one essence existing in three persons, the Father, the Son, and the Holy Spirit, equal in every divine perfection and executing distinct but harmonious offices. His ultimate plan will consummate in the glorification of Himself to the entire created order.

We believe that Jesus of Nazareth was the predicted Messiah of the Old Testament, the Christ, and the Son of the Living God. We believe in His virgin birth, absolute deity, absolute humanity, sinless perfection, voluntary humiliation, death, burial, resurrection, and ascension into Heaven. He presently serves as high priest and advocate for God's people. We believe that Christ is preeminent in all things and will return bodily to this earth to receive His kingdom and reign forever as King in a new heaven and new earth.

We believe that the Holy Spirit is a divine person, equal with God the Father and Son, and of the same divine essence. His role is that of the application of God's plan in history and redemption. Toward that end the Holy Spirit is instrumental in restraining evil, convicting of sin, judgment and of righteousness, bearing witness to the truth of the gospel, empowering the preaching and teaching of the gospel, regenerating believers, indwelling believers, sealing believers, baptizing

believers, guiding believers, teaching believers, sanctifying believers, and gifting believers according to His will for the work of the ministry.

Angels

We believe that God created sinless, mighty, spiritual beings called angels to worship and serve Him in various ways including ministry unto God's people. We also believe that Satan is a distinct personality who was once holy and enjoyed heaven's honors but fell through pride and ambition to be as the Almighty. Satan drew after him a host of angels and now serves as the malignant prince of the power of the air, the unholy god of this world, the great tempter of man, the enemy of God and His Christ, and the accuser of the saints. Although powerful and to be respected, he is not omniscient, omnipotent, nor omnipresent and cannot overcome the believer who is submitting in obedience to Jesus Christ and His Word in faith.

Man

We believe that man was created in innocence and that by voluntary transgression fell from his sinless and innocent state. Consequently, all men are now sinners by inheritance from Adam and by individual choice; and, until regenerated, are dead in sin. Thus, mankind is under just condemnation without defense or excuse for his condition. We believe that man's only hope of rescue from his state of death is through redemption in Jesus Christ.

Salvation

We believe that the salvation of sinners is wholly of God's grace; and only through the Son of God, who by appointment of the Father, voluntarily took upon Himself the form of a man, was tempted in all points as we are yet without sin in nature or deed, honored the divine law by His personal obedience, and by His death made a full and vicarious atonement for our sins. Jesus, having risen bodily from the dead, is now enthroned in heaven, and is uniting tender sympathies with divine perfection so as to serve in every way as the suitable, compassionate, all sufficient Savior and the mediator for His believer priests.

We believe that in the new birth, the one dead in trespasses and sins is made spiritually alive and receives eternal life—the free gift of God. This new creation is brought about in a manner above comprehension, not by culture, or character, nor by the will of man, but wholly and solely by the power of the Holy Spirit in connection with the Word of God to secure our voluntary obedience by faith in the gospel. We believe that every person, immediately upon acceptance of Christ as personal Savior and Lord, receives eternal life and is made at once a son of God, and that

believers are kept by the power of God through faith in a state of grace, and are eternally secure apart from any human works.

Sanctification

We believe that biblical sanctification is the process by which, according to the will of God, the believer is set apart from sin, unto Christ, and has three aspects. First, the believer has been set apart positionally before God the moment he believes. Second, the believer is being set apart progressively in his walk day by day as he grows in grace toward the likeness of Christ by the power of the Holy Spirit in the continual use of the appointed means, especially the Word of God, self-examination, watchfulness, prayer and yielding to the Spirit through biblical change. Third, the believer is to be set apart prospectively from the very presence of sin when his sanctification is completed at the coming of Christ for the church.

Church

We believe that the church universal is a New Testament institution, established by Jesus Christ, who is its sole Head. The church was revealed through the apostles, empowered and perpetuated by the Holy Spirit and is Christ's "body" for present service in the world and Christ's "bride" for glory. The church began with the New Testament saints at Pentecost and will be consummated at the coming of Christ to receive His bride.

We also believe that the church universal is manifested through the local church which is a congregation of baptized believers, associated together by a covenant of faith and fellowship of the gospel. The local church is to be observing the ordinances of Christ which consist of,

- (1) Baptism, the singular post-salvation immersion in water of a believer and
- (2) the Lord's Supper, the commemoration of our Lord's death until He comes, by the sacred use of broken bread and the freshly pressed juice of the vine as symbols of the price He paid for us.

We believe that the local church's Scriptural offices are those of pastors (also called "elders" or "bishops" in the NT) and deacons whose qualifications, claims, and duties are clearly defined in the Scriptures. Each local church has the absolute right of self-government, free from the interference of any hierarchy of individuals or organizations; and the one and only superintendent is Christ, through the Holy Spirit's direction by the Word.

The true mission of the church is expressed in the New Testament and abbreviated in Matthew 28:19, 20 and Ephesians 4:11-16. It consists of going into the entire world and bearing witness of

Christ in order to bring the gospel to all people and make disciples of the Lord and Savior Jesus Christ. We believe that it is Scriptural for true churches to cooperate in this purpose with each other in contending for the faith and for the furtherance of the gospel and that each local church is the sole judge of the measure and method of its cooperation.

Last Things and Judgment

We believe that Jesus Christ will return bodily to this earth to receive His saints including the resurrection of the righteous dead whereby they will all receive an eternal body designed for eternal dwelling in the presence of God. Christ will reign forever as King in a new heaven and new earth.

We also believe in the bema seat judgment for believers. Based on their response to God's Word, believers will be evaluated at the Judgment Seat of Christ for reward or loss. We believe in the Great White Throne Judgment of the unsaved. We believe in a literal hell and the new heaven and new earth.

The Family

We believe that marriage was created by God and is a holy and divinely established covenant between one (genetically male) man and one (genetically female) woman to be a representation of the relationship between Jesus Christ and His church. Marriage is the bond that joins one man and one woman in a single, exclusive union, as delineated in Scripture. We believe that God created sexual intimacy to be enjoyed exclusively between one man and one woman who are married to one another. Sexual intimacy outside the marriage relationship is sinful and offensive to God and any form of sexual immorality, including but not limited to adultery, fornication, homosexuality, bisexual conduct, bestiality, incest, pornography, prostitution, pedophilia, premarital sexual intimacy, cross dressing, sexting or any attempt to change one's gender, or disagree with one's biological gender, is sinful and offensive to God. We also believe that God offers redemption and restoration to all who confess and forsake their sin, seeking His mercy and forgiveness through Jesus Christ. (Gen. 2:24; Matt. 15:19, 19:4; Mark 10:7; Rom. 1:21-27; 1 Cor. 6:9-20; Eph. 5:31; Heb. 13:4; 1 John 1:9)

We believe that the roles of husband, wife, parent, and child are clearly defined in Scripture. (Ephesians 5:21-32; Colossians 3:16-21; 1 Peter 3:1-7)

We believe that sexual relationships are sacred and fulfilling only within the bonds of marriage and are condemned outside the marriage relationship. (1 Corinthians 7:3, 4; Hebrews 13:4)

We believe that children are a blessing of God and the responsibility for them rests solely upon the parent and they are to be brought up in loving, structured control, and conscientious instruction in the truths of God and His principles of life. (Psalm 127:3; Ephesians 6:4; Deuteronomy 6:6, 7; Psalm 78:4-7; Proverbs 22:6; Proverbs 17:6)

We believe that while we would not minimize the struggles that some experience with gender identity, that God created humanity with specific gender identity and that he continues this process through biological reproduction; that genotypic gender, and not feelings, determines gender identity; and that God makes no mistakes. (Numbers 23:19; Psalms 145:17; Isaiah 46:9-10)

We believe that every person must be afforded compassion, love, kindness, and proper respect and dignity. Hateful and harassing speech, behavior or attitudes contrary to Scripture directed toward any individual are to be repudiated and are not in accord with the doctrines or practices of Faith Church. (Romans 12:9-21; Ephesians 4:29-5:2)

We believe that in order to preserve the function, integrity and purity of Faith Bible Seminary as a ministry of Faith Church—a local body of Christ—and to provide a biblical role model to Faith Bible Seminary constituents, Faith Church members and the community, it is imperative that all persons employed by Faith Bible Seminary and/or any of its ministries in any capacity, or who serve as volunteers, must agree with and abide by this Statement on Marriage & Sexuality and conduct themselves accordingly.

The Sanctity of Life

We believe that all human life is sacred and created by God in His image. Human life is of inestimable worth in all its dimensions, including pre-born babies, the aged, the physically or mentally challenged, and every other stage or condition from conception through death. We are therefore called to defend, protect, and value all human life. This affirmation does not suggest that we oppose capital punishment or just war. (Psalm 139; Genesis 9:5-6; Matthew 26:52; Romans 13:1-4)

Counseling Theory and Practice Statement

We believe that the Scriptures, given by God, are sufficient for life in that they, when properly interpreted, reveal to the believer all the data necessary for one to understand his need for Christ, how he can please the Lord, and how to live in a God-honoring way regardless of the circumstances, whether comfortable or oppressive. The Scriptures are also the authoritative source with which all truth claims, including claims made by science (e.g., psychology) and

history must be evaluated. As a result, we reject all counseling theories that use presuppositions, principles, and/or methodologies that are inconsistent with the proper interpretation of the biblical text.

We also believe that genuine heart change is dependent on the ministry of the Holy Spirit. Thus, our view of counseling practice includes the importance of prayer, dependence on God, a thorough knowledge of the Word of God, and an understanding of ministering to people.

4.0 Accreditation

Faith Bible Seminary is an accredited member in good standing of the Association for Biblical Higher Education (ABHE). The college was granted accredited status by the ABHE Commission on Accreditation in 2019. The institution has been continuously accredited since that time and is scheduled for its next reaffirmation review in 2024.

Faith Bible Seminary holds institutional accreditation with ABHE; consequently, all degree and certificate programs offered are part of the institution's accreditation profile including distance (online) education and those offered at additional locations.

Association for Biblical Higher Education
5850 T.G. Lee Blvd, Suite #130
Orlando, FL 32822

407.207.0808

www.abhe.org

Financial Stability

Faith Bible Seminary receives an annual audit from Huth Thompson. The audit report is reviewed and approved by the FBS Board in the fall of each year. An electronic copy of the report is available by contacting the FBS office.

Huth Thompson, LLP
415 Columbia St., Suite 2000
P.O. Box 970
Lafayette, IN 47902-0970

765.428.5000

www.huththompson.com

5.0 Admissions

Admission requirements will be based on prior academic training, character, and intended purpose for the education. There are different admission requirements for the M.Div. and the MABC. Therefore, applicants must carefully review the program specific admission requirements.

Prospective students may apply online or acquire the application forms via the website, email, and phone.

Website: www.faithlafayette.org/seminary

Email: seminary@faithlafayette.org

Mail: Faith Bible Seminary
2000 Elmwood Ave
Lafayette, IN 47904

Phone/Fax: 765.448.1986

In general, the following policies apply to all applicants regardless of degree program.

5.1 Non-Discrimination Policy

FBS will admit qualifying applicants based on its theological convictions and purpose statement regardless of race, color, age, national or ethnic origin, or disability.

5.1 Transfer Students, Advanced Standing and Transfer Credits

FBS considers its course content to be extremely important in conferring a degree, therefore, FBS will not grant credit for courses whose subjects bear minor resemblances to the requirements for an FBS course. Additionally, students may not earn new transfer credits when matriculating with FBS.

Transfer Credits

Transfer credits will be awarded based on how well they meet the below criteria,

- It must be similar in content to a course FBS offers
- It must be a graduate course, FBS will not award transfer credit for undergraduate courses
- The course being transferred in must be for a greater than, or equal to, number of credit hours in FBS' curriculum
- Under no circumstances can more than 40% of a program be given in transfer credits

Advanced Standing



Advanced standing is distinct from transfer credit in that FBS is awarding credit for proven proficiency in a specific area. FBS will use its discretion to determine which subjects are eligible for advanced standing. Students and potential students are welcome to contact FBS to inquire about which subjects are eligible for advanced standing.

Current Eligible Advanced Standing Eligible Subjects

Greek Language: After their acceptance, M.Div. students may request a test to demonstrate their Greek proficiency and receive course credit.

Hebrew Language: After their acceptance, M.Div. students may request a test to demonstrate their Hebrew proficiency and receive course credit.

Christian Counseling and Education Foundation (CCEF): After their acceptance, MABC students may request advanced standing for certain classes in the CCEF curriculum. Interested applicants should contact FBS for more information.

Biblical Counseling Training Conference (BCTC): After their acceptance, MABC students may request advanced standing for completion of the first three tracks of the BCTC. Interested applicants should contact FBS for more information.

Applicants wishing to take courses at another seminary before enrolling at FBS should get advance approval to verify acceptance of those courses.

6.0 Financial Information

FBS aims to keep costs affordable through the faithful generosity of Faith Church and FBS donors. Tuition and fees are subject to change as economic conditions may require. Please see the website for current costs (<http://www.faithlafayette.org/seminary>).

6.1 Master of Divinity Program Costs

Application Fee (non-refundable)	\$50.00
Annual tuition for full-time students* in a ministry internship	
or full-time ministry	\$1500/yr.
Tuition for students not in ministry internship	
or full-time ministry	\$250/credit hour
Annual technology fee for local students	\$100/yr.
Annual technology fee for distance students	\$450/yr.
Churches with enrolled interns/full-time ministers	
are asked to contribute \$100/month	\$1200/per yr./per student.
Diploma Fee	\$30
Auditing (does not count toward degree)	\$125.00/credit hr.

Students that have not completed Faith Biblical Counseling Ministries' Track One training will need to do so as part of their program. **The cost of this training is not included in the above tuition and fees.**

***FBS offers a half-time six-year program also. Tuition is half of normal tuition for half-time students.**

6.2 Master of Arts in Biblical Counseling Program Costs

Application Fee (non-refundable)	\$50.00
Tuition	\$310.00/credit hr.
Administration Fee (non-refundable)	\$65.00/class
Auditing (does not count toward degree)	\$100.00/credit hr.
Extension Fee (required after 6 years, charged per year)	\$500.00
Distance Module Fee (international students only)	\$200.00/class
Diploma Fee.....	\$30

6.3 Payment Plans

FBS offers two payment plans.

- Full payment of tuition and fees no later than one week after the course start date.
- 50% payment of tuition and fees no later than one week after the course start date. The remaining 50% is due by the end of the semester in which the invoice was incurred.

These plans affect all courses except BC701 and BC800 which must be paid upon receipt of the invoice. Both BC701 and BC800 are independent study courses that engage supervisors outside the normal classroom experience. The differences between these courses and all others necessitates a different payment structure.

Since BC701 and BC 800 require a supervisor, once the supervisor has been engaged, there will be no refunds for these courses.

6.4 Failure to Meet Payments

Students who fail to make their payments will have their grades withheld from them until payment is received in full. Furthermore, students with outstanding payments at the beginning of a new semester will not be allowed to register until payments have been received in full.

6.5 Special Circumstances

FBS encourages students not to undertake the financial responsibility of graduate school lightly. However, we understand that special circumstances occasionally arise that may make timely payment difficult if not impossible. If you believe yourself to be in such a circumstance, contact the seminary. The appropriate action in special circumstances will be decided on an individual basis.

15 Week Course Refund Policy

Students who withdraw from a course will receive a tuition credit on their account according to the following schedule:

Withdrawal prior to the end of the 1 st week.....	90%
Withdrawal prior to the end of the 2 nd week.....	80%
Withdrawal prior to the end of the 3 rd week.....	70%
Withdrawal prior to the end of the 4 th week.....	60%
Withdrawal prior to the end of the 6 th week.....	50%
Withdrawal after the 7 th week of class.....	0%

The residency week of a module will be considered the seventh week of the course even if more than seven calendar weeks have elapsed since the first day of the semester.

8 Week Course Refund Policy

Students who withdraw from a course will receive a tuition credit on their account according to the following schedule:

Withdrawal prior to the end of the 1 st week.....	45%
Withdrawal prior to the end of the 2 nd week.....	40%
Withdrawal prior to the end of the 3 rd week.....	35%
Withdrawal prior to the end of the 4 th week.....	30%

Withdrawal after the 5th week of class..... 0%

Credit Balances

All credit balances will be returned to the student at the end of each semester rather than held by FBS. We believe this policy will achieve better stewardship, keep FBS in line with current educational best practices, and ensure students have greatest financial flexibility. If the student does not use the credit, it will be returned to the student as a check. Or the student may opt give their credit as a tax-deductible donation to FBS. In some circumstances, FBS will allow it's student to carry a balance long that then end of the semester.

7.0 Academic Information

7.1 FBS's Student Information System and Online Learning Software

Populi is the name of the web-based student management software that FBS uses to run its classes, schedule events, pay tuition, and more. The technology fees associated with the MABC program provide the revenue for this web-based software.

All students accepted to FBS will be given a Populi username and asked to create their own unique password. All information that you provide FBS is confidential and will not be given out except at the request of the student. However, please review these guidelines for using Populi,

Online Interaction: Students are expected to interact online in a way that is honoring to Christ. Students must always speak the truth in love (Ephesians 4:15) when posting online. Conversation that is deemed inappropriate may be flagged by students. Flagged conversations will be reviewed by the professor of the class.

Registering for Classes: Students will register for classes using Populi. For students in the MABC program, online registration will be available no later than 30 days before the start of the semester. Students in the M.Div. program will be automatically registered for pertinent classes.

Payment through Populi: Students can review the amount of tuition owed at any time through Populi. If students wish to pay through Populi they can use a credit card or bank information. Otherwise, students may pay outstanding fees by sending a check to the seminary.

7.2 Academic Progress

All FBS students must maintain a grade point average (GPA) of 2.0 out of 4.0 to achieve sufficient academic progress. Should a student fall below a 2.0 GPA for two consecutive semesters that student will be subject to review by FBS. The student will then be allowed to continue or be removed from the program. All decisions about a student's status will be made on a case-by-case basis. The Academic Dean, MDiv Chair, and MABC chair will review students' progress annually and identify students in need of academic guidance and/or help.

In addition to the above requirements, MABC students must complete their course of study in a maximum of 6 years. Every year after a student's sixth year the student will be charged a \$500 fee in addition to regular tuition expenses. Also, if a MABC student does not enroll in classes for one academic year, that student's enrollment will come under review by the seminary. Decisions about the continuation of a student's enrollment will be determined on a case-by-case basis.

In addition to the above requirements, M.Div. students must complete their course of study in no more than six years.

7.3 Unsatisfactory Academic Progress

Students who fail to make satisfactory academic progress for two consecutive semesters will be put on a one year of academic probation. During this probationary period, the student will need to maintain a 2.0 GPA or be removed from their program.

Students who are removed from FBS due to unsatisfactory academic progress may reapply to their desired program. Applicants may be asked to explain, in writing, why they believe they will be able make satisfactory academic progress.

All decisions about unsatisfactory academic progress will be made on a case-by-case basis.

7.4 Full Time Student Definition

Students are considered full time at FBS if they are engaged in nine or more credits in a semester. A student is also considered full time if they are engaged in eighteen or more credits in an academic year. One academic year equals Winter and Spring semesters in the MABC. For the M.Div. program, one academic year is the Fall, Spring, and summer semesters.

7.5 Attendance

FBS expects all students to attend every class, learning module, or online lecture. Planned absences must be approved in advance with a plan in place to meet the requirements for that missed class/lecture period. Failure to meet the requirements of all class/lecture periods may result in reduction of grade, failure of a class, or removal from the program. Special exceptions will be made on a case-by-case basis.

7.6 Withdrawal

Students wishing to withdraw from FBS must first speak to the head of their program. Students may request to withdraw from FBS at any time. Upon withdrawal, students will maintain their eligibility to re-enroll for one academic year. After one academic year, the student will be made inactive. If the student wishes to re-enroll, they may be subject to an interview and \$40 re-admittance fee. After two years inactive, students must reapply. Special exceptions will be granted on a case-by-case basis. Student will be required to reapply if they have been withdrawn for more than two years.

Students that are inactive for more than one academic year (two semesters) may be withdrawn automatically. Special exceptions will be granted on a case-by-case basis.

7.7 Learning Resources

Faith Bible Seminary students have access to the Goode-Smith Theological Library with a volume collection of over 17,000. Additionally, FBS provides access to the ATLA religion journal database with over 235,000 full text journal articles. M.Div. students are required to have a Logos Software package which provides a personal library of over 1,200 theological resources.

Students are encouraged to also visit their local university and community libraries for access to learning resources. FBS will provide some training on use of online and local library resources.

7.8 Incomplete Classes

A grade of incomplete is a record of work that was interrupted by unavoidable absence or other causes beyond a student's control, which work was passing at the time it was interrupted and the completion of which does not require the student to repeat the course in order to obtain credit.

The incomplete grade is not to be used as a substitute for a failing grade. The instructor shall also indicate the grade the student has earned on the work completed, and the weight to be given to the remainder of the work in computing a final, permanent grade. The student must achieve a permanent grade in the course no later than one year after the incomplete is given, or the incomplete grade will revert to a failing grade.

7.9 Distance Education and Independent Study Classes

Students participating in distance education are expected to participate online through discussion boards. When applicable, students are expected to participate in live or recorded class times. Students who do not participate in online discussion may not pass the classes in which they are enrolled.

Independent study classes are directed by an FBS faculty member, but it is up to the student to ensure that all their assignments are uploaded in a timely manner. Professors of independent study courses will be expected to answer student questions about curriculum and assignments.

8.0 Seminary Adjunct Faculty

Old Testament Studies



Brent Aucoin

B.S.: Mechanical Engineering, Oklahoma State University
M.S.: Engineering, Purdue University
M.Div.: Central Seminary
Th.M.: Trinity Evangelical Divinity School
Ph.D.: Baptist Bible Seminary (Clarks Summit, PA)
FBS President
FBS M.Div. Program Chair

Dr. Brent Aucoin joined the staff of Faith Church in Lafayette, IN in July of 1998. Brent is the President of Faith Bible Seminary, Chair of the Seminary's M.Div. Program, and Pastor of Seminary and Soul Care at Faith Church (Lafayette, IN); ACBC certified; instructor and counselor at Faith Biblical Counseling Ministries; and a retreat and conference speaker. He and his wife, Janet, have two adult children.

New Testament Studies



Rob Green

B.S.: Engineering Physics, Ohio State University
M.Div.: Baptist Bible Seminary
Ph.D.: New Testament, Baptist Bible Seminary
FBS MABC Program Chair

Dr. Rob Green joined the Faith Church staff in August 2005. Rob's responsibilities include oversight of the Faith Biblical Counseling Ministry and teaching New Testament at Faith Bible Seminary. He serves on the Council Board of the Biblical Counseling Coalition and as a Fellow for the Association of Certified Biblical Counselors. Pastor Green has authored, co-authored, and contributed to nine books/booklets. Rob and his wife Stephanie have three children.

Biblical Counseling

John Babler



M.S.S.W.: University of Texas at Arlington

M.A.: Southwestern Baptist Theological Seminary

Ph.D.: Southwestern Baptist Theological Seminary.

Dr. Babler has served in inner-city missions, as a youth minister and associate pastor in local churches, as minister of missions, and in hospice. He has been active in the emergency services for over 20 years serving as a volunteer firefighter and chaplain and as a police chaplain and officer. In 2020, he retired as a Professor at Southwestern Baptist Theological Seminary after teaching for 28 years and began his service at Mid-America. Dr. Babler has published three books on biblical counseling, authored journal and blog articles, and contributed to other works as well. In addition to formal academic classes, he teaches a variety of workshops and certificate training in Biblical Counseling and chaplaincy. Dr. Babler and his wife Marilee were married in 1984 and are blessed with 11 children and 12 grandchildren.



Amy Baker

B.A.: Hanover College

M.S.: Organizational Psychology, Purdue University

Ph.D.: Organizational Psychology, Purdue University

Dr. Amy Baker serves as the Resource Director for Faith Church in Lafayette, IN. She is the author or co-author of over a dozen books and booklets. Dr. Baker is an ACBC certified biblical counselor, an instructor and counselor at Faith Biblical Counseling Ministries, and a Council Board member of the Biblical Counseling Coalition.



Kevin Carson

B.A.: Pastoral Ministry and Bible, Baptist Bible College, MO
M.A.: Biblical Studies, Baptist Bible Graduate School of Theology
M.Div.: Biblical Studies, Baptist Bible Graduate School of Theology
D.Min.: Pastoral Counseling, Westminster Theological Seminary

Dr. Kevin Carson is the department chair for Biblical Counseling at Baptist Bible College and Theological Seminary (Springfield, MO) and Pastor of Sunrise Baptist Church (Ozark, MO). Pastor Carson is a Council Board member for the Biblical Counseling Coalition. He is certified with ACBC and IABC. Dr. Carson has contributed to seven books. Kevin and his wife, Kelly, have four children. He writes a daily blog for Christian living at KevinCarson.com.



Joshua Greiner

BA: Political Science, Purdue University
M.Div.: Faith Bible Seminary
Th.M.: Biblical Counseling, Southern Baptist Theological Seminary
Ph.D.: Biblical Counseling, Southern Baptist Theological Seminary (ABD)

Pastor Greiner oversees the Faith West Campus for Faith Church in Lafayette, IN as well as Faith Biblical Counseling Ministries. He is an ACBC certified counselor and fellow. He is an adjunct professor for Faith Bible Seminary and also serves as the vice-chair of the Board of Directors for the Faith Community Development Corporation. Josh is married to Shana and has four children: Winston, Cecilia, Lorelai, and Edwin.



Robert D. Jones

B.A.: History, The King's College

M.Div.: Trinity Evangelical Divinity School

D.Min.: Pastoral Counseling, Westminster Theological Seminary

D.Theol.: Systematic Theology, University of South Africa

Dr. Robert Jones serves as a professor of Biblical Counseling at The Southern Baptist Theological Seminary in Louisville, KY. Prior to this role, he served for nineteen years as a lead pastor in West Virginia, and then twelve years as a professor at Southeastern Baptist Theological Seminary and as a part-time Biblical Counseling Pastor in Raleigh, NC. Bob has taught adjunctively at Faith Bible Seminary, Westminster Theological Seminary, and at several seminaries in Brazil. He is a Council Board member of the Biblical Counseling Coalition, a Certified Christian Conciliator with the Institute for Christian Conciliation, and a Fellow with the Association of Certified Biblical Counselors. Bob has written four books, eleven mini-books, and numerous book chapters and journal articles. He is an active member and elder nominee of Hunsinger Lane Baptist Church in Louisville where he counsels, trains counselors, leads a home group, and occasionally preaches and teaches adult Sunday School. Bob and his wife, Lauren, have two adult sons, two daughters-in-law, and four granddaughters.



Stuart Scott

B.A.: Christian Education, Columbia International University

M.Div.: Grace Theological Seminary

Th.M.: Leadership and Biblical Counseling, The Southern Baptist Theological Seminary

D.Min.: Biblical Counseling, Covenant Theological Seminary

Dr. Stuart Scott serves as Director of Biblical Counseling at Bob Jones University & Seminary (Greenville, SC) and adjunct Professor of Biblical Counseling at The Master's University, (Santa Clarita, CA); Southern Seminary (Louisville, KY) and Faith Seminary (Lafayette, IN); Director of Membership Services, the Association of Certified Biblical Counselors (ACBC); Stuart has over thirty-five years of experience in counseling and pastoral ministry. He is a Fellow with the

Association of Certified Biblical Counselors. He is also an author of several books on biblical counseling. He is married to Zondra, and they have two grown children and two grandchildren.

Church Administration, Leadership, Growth, Strategic Planning, Homiletics



Steve Viars

B.S.: Pre-Seminary & Bible, Baptist Bible College (Now Clarks Summit University)
M.Div.: Grace Theological Seminary
D.Min.: Biblical Counseling, Westminster Theological Seminary

Dr. Steve Viars has served at Faith Church in Lafayette, IN since 1987. Pastor Viars leads and equips Faith Church as Senior Pastor with a focus on preaching and teaching God's Word and using his organizational skills in guiding the implementation of the Faith Church mission and vision. He oversees the staff, deacons, and all Faith Church ministries. Dr. Viars serves on the boards of the Association of Certified Biblical Counselors, Biblical Counseling Coalition, Vision of Hope, and the Faith Community Development Corporation. Steve is the author, co-author, or contributor to six books and numerous booklets. He and his wife, Kris, were married in 1982 and have two married daughters, a son, and 5 grandchildren.



Joe Blake

B.S.: Civil Engineering, Purdue University
M.S.: Structural Engineering, Purdue University

Joe Blake serves as the Chairman of the Board at Faith Church in Lafayette, IN. He has led several of the construction projects at Faith Church as well as the strategic ministry planning efforts at Faith Church. He serves as a Faith Biblical Counseling Ministry lay counselor and conference speaker. He owns Iron Men Properties, a real estate development company and is a Professional Engineer. Joe and his wife, Susan, have five children and seven grandchildren and have been members at Faith Church since 1981.

Church History



Kirk Fatoool

B.A.: History and Philosophy, Bloomsburg University
M.A.: History, Purdue University
PhD. Leadership, Lancaster Bible College (In process)
Faith Bible Seminary Registrar
Faith Bible Seminary Dean of Enrollment Management

Kirk Fatoool became a staff member of Faith Bible Seminary in July of 2015. Kirk is a member of The American Association of Collegiate Registrars and Admissions Officers. He serves at Faith Bible Seminary as Registrar and as the Dean of Enrollment Management. Kirk is married to Jen and has three children.

Systematic Theology and Ethics



Andrew Naselli

B.A.: Bible, Baptist College of Ministry
M.A.: Bible, Bob Jones University
Ph.D.: Theology, Bob Jones University
Ph.D.: New Testament Exegesis and Theology, Trinity Evangelical Divinity School

Dr. Andy Naselli is associate professor of Systematic Theology and New Testament at Bethlehem College and Seminary in Minneapolis and a pastor of The North Church. Andy is the author or editor of over twenty books, including *Conscience* and *How to Understand and Apply the New Testament*. He and his wife, Jenni, have four daughters.

Hermeneutics, Missions, Worldview and Apologetics



Cody Podor

B.S.: Church Ministry, Liberty University

M.A.: Church Planting Evangelism, Liberty University

M.Div.: Faith Bible Seminary

Th.M.: Midwestern Baptist Theological Seminary

Ph.D.: Theology, Midwestern Baptist Theological Seminary

Cody Podor serves as Discipleship Pastor (Parrish, FL); Professor of Bible and Theology, Liberty University (Lynchburg, VA). He is passionate about educating and equipping God's people for more effective Christian service. Cody and his wife, Katie, have two children.

9.0 Master of Divinity

9.1 Overview

The Master of Divinity (M.Div.) degree is the traditional degree for professional training of those desiring ordained pastoral ministry. It is also the prerequisite for further theological studies in the Master of Theology programs (ThM.), Doctor of Ministry programs (D.Min), and Doctor of Philosophy programs (PhD) of other seminaries.

Due to our interpretation of the Bible regarding pastors, FBS only accepts males into the Master of Divinity program.

FBS offers a traditional Master of Divinity degree with an emphasis in pastoral studies.



Mission Statement

The Master of Divinity degree is a graduate level program designed to equip men—called by God as shepherds of His people—with a biblical education, to be effective Christian pastors and missionaries in our world. Excellence in biblical education for effective ministry is accomplished through

biblical theological understanding, personal growth, and professional preparation.

In dependence upon God, and with the diligence of students and faculty, graduates of the Master of Divinity program at Faith Bible Seminary will achieve the following program objectives:

Program Objectives

1. Understanding the Sufficient Scriptures as evidenced by:

- 1.1. An understanding of and commitment to the gospel and evangelical orthodoxy within its historical context.
- 1.2. An understanding of and commitment to Scripture as the ultimate authority by which every realm of human knowledge and endeavor should be judged.
- 1.3. A growing hermeneutical competence in understanding the message of Scripture in its original languages and synthesizing its theology in order to apply truth to oneself, the church, and society.

2. Enhanced Academic Ability as evidenced by:

- 2.1. A demonstrated ability to research topics pertaining to Christian ministry and critically evaluate trends and practices from a Scriptural basis.
- 2.2. A growing ability to responsibly engage in scholarly discourse in regard to past and current theological issues.
- 2.3. An understanding of worldviews and how to responsibly engage others with different worldviews to bring to bear the claims of the gospel.

3. Spiritual Growth as evidenced by:

- 3.1. A life that demonstrates a commitment to being a humble disciple of Christ and growing in obedience to His commands, learning to frame life in terms of loving God wholeheartedly, and loving one's neighbor.
- 3.2. A growing dependence on and submission to the Holy Spirit as evidenced by the fruit of the Spirit in the context of relationships.

4. Valuing Relationships as evidenced by:

- 4.1. A commitment to caring and praying for the physical and spiritual needs of one another during the seminary experience.
- 4.2. A growing ability to minister the Word to one another through encouragement, exhortation, confrontation, and vulnerable sharing of God's work in one's own life.

Preparation for Service as evidenced by:

- 4.3. The ability to articulate a biblical vision for the local church and pastoral leadership, engaging the multifaceted challenges of ministry with integrity and growing wisdom.
- 4.4. A growing proficiency in the ministry of the Word and the “care of souls,” both in corporate and individual contexts.
- 4.5. An understanding of and commitment to a biblical strategy for equipping the body for the worship of God, ministry to one another unto Christian maturity, and outreach to the local and world community.
- 4.6. An understanding of God’s historical-redemptive mission in the world and commitment to being a partner in that mission through word and deed.
- 4.7. An understanding of and commitment to cross-cultural engagement for the sake of the gospel, critically reflecting on one’s own cultural biases and seeking to be a learner from other cultures for the sake of the gospel.

9.2 M.Div. Curriculum

The M.Div. curriculum was developed based on the traditional excellence that has characterized American seminaries for the last hundred years. The curriculum is divided along the lines of Bible Interpretation, Old Testament, (through a study of the Hebrew Bible), New Testament (through a study of the Greek New Testament), Church History, Systematic Theology, Missions and Evangelism, Biblical Counseling, and Practical Theology. Occasionally, depending upon the need of the students and availability of professors, slight changes in this curriculum may occur.

The M.Div. program is only offered once every three years, in sequence, and there are no electives. As such, if students wish to graduate in 3 years, they must take each class as it is offered or receive credit for classes through advanced standing or transfer credit.

M.Div. Curriculum

Bible Interpretation		5 hours	Description
BI 520	Foundations of Interpretation and Hermeneutics	2 hours	An examination of the starting points for interpretation that issues in the fundamental principles of hermeneutics that will be applied in the exegesis courses
BI 580	Bible Geography	1 hour	A detailed overview of the land of Canaan with emphasis on how the geography of the land sheds insight upon the meaning of the biblical text
BI 620	Intertextuality	2 hours	An introduction to the use of Scripture within Scripture with an emphasis on how the OT uses the OT and how the NT uses the OT

Old Testament		19 hours	
OT 503	Hebrew I	4 hours	An introduction to Hebrew with emphasis on immersion into the language through significant use of computers, inductive study of the language, and study of grammar and syntax
OT 504	Hebrew II	4 hours	A continuation of Hebrew I with emphasis on immersion into the language through significant use of computers, inductive study of the language, and study of grammar and syntax
OT 505	Hebrew Readings	2 hours	A focus on reading large amounts of Hebrew with the intent of understanding the patterns and structure of the language
OT 633	Hebrew Exegesis	3 hours	A careful application of hermeneutics and the tools of Hebrew to study OT selections from the Historical books, the Psalms, and the Prophets
OT 720	Pentateuch and Historical Books	3 hours	An integrative examination of the Pentateuch and Historical books regarding their nature and major themes with an emphasis on

			tracing the progress of God's revelation over time through these books
OT 722	Poetic and Prophetic Books	3 hours	An integrative examination of the poetic and prophetic books regarding the character of each book and how the books contribute to the development of God's revelation over time

New Testament		22 hours	Description
NT 503	Greek I	4 hours	An introduction to Greek with emphasis on immersion into the language through significant use of computers, inductive study of the language, and study of grammar and syntax
NT 504	Greek II	4 hours	A continuation of Greek I with emphasis on immersion into the language through significant use of computers, inductive study of the language, and study of grammar and syntax
NT 505	Greek Readings	2 hours	A focus on reading large amounts of Greek with the intent of understanding the patterns and structure of the language

NT 633	Greek Exegesis I	3 hours	A careful application of hermeneutics and the tools of Greek to study a Pauline Epistle
NT 635	Greek Exegesis II	3 hours	A careful application of hermeneutics and the tools of Greek to study the narratives of the NT
NT 720	Synoptic Gospels and Johannine Literature	3 hours	An integrative examination of the gospels and Johannine literature regarding their nature and major themes with an emphasis on tracing the progress of God's revelation in Christ through these books
NT 722	Acts and the Pauline and General Epistles	3 hours	An integrative examination of the epistles of the NT regarding the character of each book and how the books contribute to the development of God's plan in Christ and the church

Church History and the History of Christian Thought		3 hours	Description
CH 510	History of Christianity	3 hours	A broad overview of the history of Christianity with an emphasis on the development of theology since the time of the apostles

Missions and Evangelism		5 hours	Description
ME 600	Theology of Christian Missions	2 hours	An examination of the basis for global Christian missions which seeks to develop a biblical theology of missions for our world today
ME 620	Apologetics and World Religions	3 hours	An examination of the philosophical underpinnings of Christianity with applications to evangelism and defending the Christian faith in comparison to other world religions.

Systematic Theology		15 hours	Description
ST 520	Foundation of Interpretation and Hermeneutics	2 Hours	An examination of the starting points for interpretation that issue in the fundamental principles of hermeneutics
ST 541	Systematic Theology I	3 hours	Examines the method of systematic theology and what the whole Bible teaches about God, the word of God, humanity, sin, and angels.
ST 542	Systematic Theology II	3 hours	Examines what the whole Bible teaches about Christ, the Holy Spirit, and salvation.
ST 543	Systematic Theology III	3 hours	Examines what the whole Bible teaches about the

			church (including the relationship between Israel and the church) and the end times.
ST547	Ethics	3 hours	Analyzes contemporary moral issues from a biblically informed, God-centered perspective.
ST 630	Ordination Doctrinal Paper	1 hour	A synthesis of the student's understanding of the major branches of systematic theology into a paper that could be used for an ordination council

Biblical Counseling		10 hours	Description
BC 501	Basics of Biblical Counseling	3 hours	An introduction to biblical counseling and its practice
BC 502	Biblical Counseling Theology	2 hours	A development of the theology of biblical counseling with emphasis on progressive sanctification
BC 503	Advanced Issues in Biblical Counseling	3 hours	A study of advanced issues that a pastor could face in counseling and the development of the critical thinking skills necessary to navigate these complexities
BC 610	Supervised Observation I	1 hour	Twenty-five hours of supervised counseling that could be used for ACBC certification

BC 612	Supervised Observation II	1 hour	Twenty-five additional hours of supervised counseling that could be used for ACBC certification
--------	---------------------------	--------	---

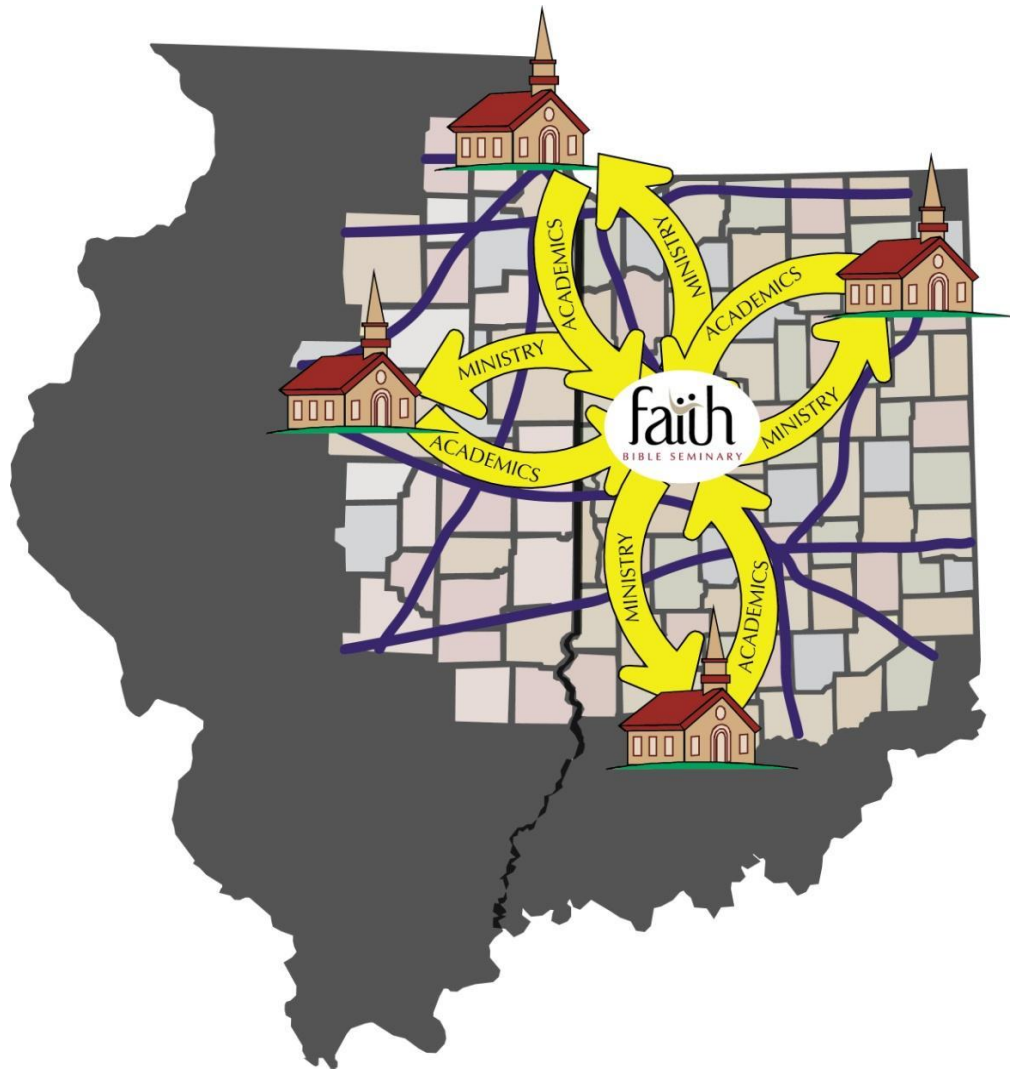
Practical Theology		9 hours	Description
PT 610	Expository Preaching	3 hours	A practicum exploring how to skillfully construct and deliver a sermon with emphasis on clear and relevant communication that ministers to the audience
PT 614	Final Equipping	2 hours	A practicum that emphasizes a variety of sermon and teaching structures with continued emphasis on clear, relevant communication that ministers to the audience in combination with the developing skill of creativity and variety
PT 620	Church Leadership, Administration, Growth	2 hours	A study of the biblical principles of effective church leadership, administration, and growth that make a difference in the community
PT 630	Local Church Strategic Planning	2 hours	An examination of the mindset behind appropriate biblical planning and leading a congregation to be engaged in strategic planning
TOTAL REQUIRED	86		

9.3 Class Scheduling

Courses will be scheduled primarily on only one full day of the week. Some semesters may require two days per week. Approximately four one-week modular courses will also be taken throughout each academic year. This type of schedule permits students to be on campus part-time and at their home church working part-time. Attending courses requires the student to either drive to Lafayette, IN or participate through conferencing technology.



9.4 The Unique Paradigm of FBS's M.Div.



- Students can commute to FBS or participate through live-distance learning conferencing for M.Div. level academic training one to two days per week year-round for three years.
- A student known well by a local church is hired there as an intern. The student works in practical ministry at that church three to four days per week year-round for three years.
- That local church receives additional staff support and is actively involved in training men for ministry.

9.5 Curricular Practical Training (CPT)

General Philosophy

Pastoral ministry is not only an academic endeavor. Certainly, most seminaries recognize this and require students to have an internship or a certain number of semesters of “field ministry.”

At FBS the practical training is not simply be an “add-on” to the education; it will be central to it. Every student enrolled in the program must be working in a local church during their time as a student at FBS. If a student already has extensive ministry training or if the student’s long-term goal is not vocational ministry, an exception may be granted.

The partnering church will provide a partnering agreement for every student they wish to send to FBS.

Each partnering local church (See section 7.0) will be responsible for directing the CPT of its intern. FBS is available for guidance and assistance in how to structure CPT. FBS may ask partnering pastors, from time to time, for updates regarding progress of its students. Each local church will attempt to strike a balance between the following priorities:

- Strengthening the student’s weaknesses
- Utilizing the student’s gift set
- Meeting the needs of the local church

Faith Church CPT

FC has the resources to provide a living stipend and housing for several students and their families. The intern student body makeup may consist of a combination of both singles and married individuals. The resources will be proportionately distributed.

All FC students will be required to work at FC in ministry areas 25-29 hours per week.

In addition, paid FC students and/or students benefitting from FC provided housing and stipend will also be required to serve in the Faith Community Center (FCC), Faith West (FW) or the Northend Community Center (NCC) as part of their CPT experience. Each student will serve on average twelve hours per week.

Spouses of paid FC students and/or students benefitting from FC provided housing and stipend will also be required to serve in the FCC or FW or the NCC twenty-four hours per week for fifty weeks of the year. Wives may take the same corresponding weeks of vacation off as their husbands. If an intern wife in this work requirement situation becomes pregnant, she will receive eight weeks leave from work. Child-care will be the couple's responsibility to manage while still meeting these requirements.

A FC married intern may request only a modest living stipend with no FC provided housing. In this case the wife will not be under any FCC or FW work requirements. The wife may work outside of the home to cover living expenses and the remainder of the family medical insurance costs.

Under no circumstances will a student be allowed at any time to have himself or his family without medical insurance coverage. Proof that every family member is covered will be required before a student is allowed to be on staff as an intern at FC.

During the application process, the student is asked to delineate his preferences in these matters. Upon acceptance at FBS, a specific three- year agreement will be issued for the potential intern and his wife (if applicable) to sign. The agreement will explicitly define the benefits received and the responsibilities of the student and wife (if applicable).

9.6 Potential Students

Informed Decision Making

Below are strategic distinguishing characteristics of FBS to aid you in determining if FBS would be a good fit for you.

- **FBS will be admitting M.Div. students every three years—** (ex. 2025, 2028, and 2031) Will your period for entry into a seminary mesh with one of these years?
- **FBS has a primary purpose of training young men for pastoral ministry.** Do you demonstrate a passion for the pastorate? Do you have the ability to make a three-year commitment for equipping and training? Do you have a local church that recognizes your gifts and abilities for pastoral ministry and is encouraging you to be involved in full-time pastoral ministry?
- **FBS is located in the Northend Community Center and intends to equip pastors with a heart for community ministry.** Do you desire an education that equips you for community-based ministry?
- **FBS's mentoring program is done in partnership with local churches.** Are you part of a local church? If not, see the section entitled "Special Student Situations" below (Section 6.0).
- **FBS is a graduate level M.Div. program.** Do you have a bachelor's degree from an accredited college or university?
- **FBS is requiring that students be debt-free upon entrance and exit of the seminary program.** Are you free from enslaving debt?

Desiring Faith Church CPT?

FC offers several paid CPT positions with housing provided. Priority will be given to those men who have been raised up in Faith Church and demonstrate a call to pastoral ministry. However, if you are an individual desiring training at FBS but are not a part of FC, you have the following options:

1. Go through the application process as specified in Section 8.0 and you may still receive one of the positions available.
2. If you are not admitted to one of FC's fully paid positions, you may be considered for an unpaid internship. FC will not have the capability of hiring and providing housing for more than a set number of interns and their families. However, FC could accommodate unpaid interns who are financially independent (through the work of a spouse or other financial means of support). The student would need to demonstrate that during the three years of training, his essential needs would be met by provision other than incurring debt or by his working in outside employment. Housing may or may not be available in this scenario depending upon the make-up of the single/married ratio of the interns of FC.

Admission to an unpaid position will be handled on a case-by-case basis. You are encouraged to speak directly to Brent Aucoin, FBS President, at 765.448.1986.

Desiring a Non-Faith Church CPT?

If you are connected to a local church and that church is a partner with FBS (*see section 7.0*), please contact your pastoral leadership team directly about the opportunity to participate in CPT there.

If your local church is not a partnering church, please approach the pastoral leadership team and let them know about this strategic partnering opportunity.

The partnering church will provide a partnering agreement for every student they wish to send to FBS.

Special Student Situations

Students with no area local church connection:

If you are not currently connected to your local church, you have two options for admittance:

1. Seek independently to establish a relationship with your local church.
2. If you desire CPT FC, refer to the two options in the paragraph above entitled “Desiring Faith Church CPT?”

Men currently in ministry and want to further their education with FBS:

Men who are currently in ministry and desire an M.Div. degree from FBS are welcome to apply. Men currently employed in full-time ministry will be eligible for the annual tuition for full-time students in a ministry internship or full-time ministry in section 6.1

Students who desire to take classes for credit:

Any individual who desires to take classes for credit is welcome to apply. The student must meet the admissions requirements and will be charged tuition. Please see section 6.1 for tuition costs.

Individuals desiring to audit a class:

Any individual who desires to audit a class may do so. The individual must be accepted to FBS. Also, the individual will be charged half of the regular tuition. Please see section 6.1 for tuition costs.

International Students

Students wishing to participate with FBS from outside the US are welcome to attend FBS on an F-1 visa. International students must participate in CPT (with FC or another church) and be able to provide FBS with evidence that they can pay for their tuition and living expenses.

Additionally, international students must be enrolled in a full-time course of study while at FBS.

9.7 Local Church Partnering

If you are part of an evangelical church, FBS invites a partnering relationship. There are several benefits to partnering with local churches, including the following:

- Strengthening the body of Christ by training and deploying men for ministry
- Strengthening the church by training existing pastors
- Multiplying your local church's particular ministry philosophy
- Assisting your ministry in achieving its goals
- Pioneering a new model for seminary training

Candidates for Partnering

Pastor (or potential student), is your local church a candidate for partnering with FBS? Consider the following questions:

- Is my church evangelical in doctrine?
- Is my church interested in equipping men for pastoral ministry?
- Is my church interested in helping pioneer a different seminary model that addresses concerns in the traditional seminary model?
- Does my church currently have a man interested in training for ministry?
- Is my church willing to provide housing and a stipend for a three-year period (see sample stipend package below)?
- Does my church need some additional staff assistance for ministry?
- Would my church send an individual to a seminary that has a biblical hermeneutic resulting in a pre-millennial eschatological position?
- Is my church willing and able to make the church partnering contribution listed in the financial section?

If you can answer “yes” to these questions, then read further. Your church could be a strategic partner with FBS.

Requirements for a Local Church Partnership

Be evangelical in nature, fundamental in faith.

FBS will teach a curriculum that is based upon traditional fundamentals of the Christian faith. Systematic theology will be taught from a pre-millennial position for eschatology and a cessationist view regarding the revelatory gifts of the Holy Spirit such as prophecy and tongues. While we invite any evangelical church to participate, we understand that those of a Reformed background with different views of the eschatological and Spiritual gifts, though evangelical and fundamental in faith, may not be interested. Each partnering church must submit a doctrinal statement with its application for partnership.

Have a man in your ministry who is a potential candidate for the pastorate and desirous of academic and practical training.

If you have a man in your ministry sphere who has demonstrated a calling for the pastorate and needs training, partnering with FBS is a potential option. FBS does not provide or recommend a student for any other local church except FC.

Be willing to hire the potential pastoral candidate for a three-year period as a part-time intern.

The pastoral candidate will be enrolled in our Master of Divinity degree program year-round at FBS. With the remainder of his time, he will be serving your local church as a paid intern for three years.

Be willing to provide housing for this candidate for three years.

So that the student is not required to work outside of his studies and the church environment, we are asking partnering churches to provide not only a stipend but housing as well. An example of what FC is planning to provide for its CPT students is given below.

Be willing to support FBS with a church partnering contribution.

The church partnering contribution is \$1,200 per year per student. This means that if your church is sending two students, FBS requests \$2,400 per year as a contribution.

Be willing to provide practical ministry training for this candidate for three years.

The student intern will be functioning as a pastoral apprentice. He should be given significant ministry experience in his three years of service that attempts to strike a balance between these:

- Strengthening the student's weaknesses in ministry
- Utilizing the student's gift set
- Meeting the needs of the local church

If you your church would like to send more than one man to FBS. The partnering church will provide a partnering agreement for every student they wish to send to FBS.

Crafting a Benefit Package

If your local church decides to partner with FBS, you will be asked to put together a compensation package based upon the needs of your intern and the resources of your church. This information will be required on the *Local Church Partnering Application Form*. The *Local Church Partnering Application Form* can be found [here](#).

Also, your local church should consider whether its students would be licensed to preach the gospel. This designation has implications as to whether the students would be considered “self-employed” (as many pastors are considered) or simply as employees of your local church. FC will not be licensing its students; the FC students will be considered employees of FC.

For a detailed example of a benefit package, please contact FBS (seminary@faithlafayette.org).

Student Conflict Resolution

FBS realizes that providing a three-year CPT is a significant commitment by a local church. Thus, FBS has not chosen to make referrals of students for CPT at local churches other than at FC. Each church which desires to participate should already have a potential student in its midst desiring M.Div. level training. Then, that local church would already be familiar with the character and nature of the student/intern it hires because the church has been actively engaged in his discipleship process.

If there are problems academically or professionally in the three-year term, principles of communication and problem solving should be followed from Matthew 18 and Ephesians 4.

Problems that surface which indicate an intern is not qualified for the pastorate will result in expulsion from FBS and will release the partnering local church from its commitment to provide the CPT and housing.

FAQs

Where does my church “get” an CPT student?

By raising up men in your own ministry who demonstrate a call to full-time ministry.

If my church desires to provide CPT, will Faith Bible Seminary act as a “placement” service and provide my church with a student?

Due to the extended nature of the commitment (three years), FBS has determined that it would not be best to act as a “placement” service with these CPT opportunities. There are many advantages to raising up your own students. You and your church know the man and his character. You also know if the young man meets the character qualifications of 1 Timothy 3.

Who provides the housing for the student?

The local church that is sponsoring the intern provides the stipend for the three-year CPT and the housing arrangements. FBS provides the low-cost academic training.

What if I want to send more than one student to FBS?

The partnering church will provide a partnering agreement for every student they wish to send to FBS.

The Next Steps

If your local church is interested in partnering with FBS, please follow the steps below.

- Call Brent Aucoin, FBS President, 765.448.1986, if you have any questions about the program.
- Complete and return the [Local Church Partnership Preliminary Interest Form](#)
- Begin dialoguing with your church's staff and leadership.
- Begin dialoguing with your potential student.
- Decide as a church if you are willing to commit to this three-year CPT with a particular student.
- Complete and return the *Local Church Partnering Application Form*. This will be sent to you after you complete the *Local Church Partnership Preliminary Interest Form*.

Friends of FBS

Your church may not be in a position to provide CPT and housing at this point in time. However, if you are supportive of this ministry endeavor and want to contribute to expanding the scope of training young men for ministry, please consider an annual gift to FBS. We desire to be training as many young men as possible for Christ's work but are limited by financial realities. If you are interested in supporting FBS, please call Brent Aucoin, FBS President, at 765.448.1986. Thank you!



9.8 Admissions

Application Requirements

- [Complete an online application](#)
 - Applicants can choose to participate in CPT. Applicants must note, in their application, if they are participating in CPT.
- Submit a personal testimony
- Submit your spouse's personal testimony (if applicable)
- Submit a ministry experience form
- Submit three letters of reference from those who can speak to your spiritual life, including, if possible, your pastor
- Submit the transcripts of the school(s) where you earned your bachelor's degree (if applicable)
 - Ideally, applicants should possess an earned bachelor's degree (there is no specific field required) or its equivalent from an accredited college or university, with a minimum grade point average (GPA) of 3.00 (on a 4.0 scale).
 - If you do not hold a bachelor's degree, please see "No Bachelors Special Requirements" below
- If you reside in a country where English is not the primary language, you will be required to provide FBS with a TOEFL score.

When the above requirements are met, the M.Div. chair will review the application and make an admissions decision. Once the chair has decided, the applicant will be notified via email.

Attending FBS through Conferencing Technology

For students not within commuting distance to Lafayette, on your application please note that you would like to attend via conferencing technology.

Student Requirements

[You can begin application and see more information here.](#)

Regarding Character Each FBS student is expected to maintain 1 Tim. 3:1-7 character throughout his time as a student.

Regarding Debt Each FBS student is expected to be debt-free before entering the seminary and upon graduation. Each applicant will be examined on an individual basis as to his indebtedness.

Regarding Outside Employment No FBS student will be participating in outside employment (unless a special exception is granted) since he will be working full-time (half-time student, half-time intern).

Regarding Computers Each FBS student will be required to have a laptop capable of wireless internet and capable of running the software—Logos Bible Software Platinum Edition. FBS students will receive an academic discount and will place a bulk order with all new students at the beginning of the cohort. The academic price of this software has been in the range of \$1100-\$1300 in the past and the student should be prepared to purchase this software when the bulk order is placed. Other software that is required is a current version of the Microsoft Office Suite.

Regarding Work Ethic It cannot be stressed enough that students will be carrying a significant academic load and also a significant ministry load year-round. This program **IS NOT** for students who are prone to laziness. Just as students going into medical fields face a highly rigorous training environment, students entering into full-time vocational ministry for our Lord should not expect less.

The student is expected to be diligent and disciplined in his work, studies, and service. A mentality of working diligently for six days and resting one is the standard. Problems or struggles in priorities regarding family life, academics, or internship should be addressed quickly through biblical communication with the appropriate individuals.

Students will receive breaks between semesters in which to schedule personal vacation time (two weeks per year). The following national holidays will also be recognized: New Year's Day, Memorial Day, Independence Day, Labor Day, Thanksgiving Day, and Christmas Day. During the rest of the year students will be bearing a load that will require between 50-60 hours per week of work.

Regarding Commitment Students who have been granted the privilege of receiving a paid three-year internship and academic training should not enter into this arrangement lightly. The

working members of each partnering local church have provided the funding for this educational opportunity. Thus, for those students who are provided with a three-year internship, a three-year commitment is expected and required. Only in extreme circumstances, in consultation with the seminary and the intern's overseeing church, should this commitment be broken. Faith Church's paid interns who break the commitment may incur a financial penalty for the resources invested. See specific FC agreement details.

No Bachelors Special Requirements

FBS allows 10% of its total student body to participate in the M.Div. program without holding a bachelor's degree. If the student does not hold a bachelor's degree extra consideration will be given to the potential student's ministry experience.

Students without a bachelor's degree must complete the application process minus sending FBS their transcripts.

When a student not holding a bachelor's degree completes the M.Div. program after having been accepted for admission, they will earn a Master of Divinity. In addition to the normal requirements, students with no bachelor's degree will be reviewed on the below criteria,

- Relevant Non-Degree Training
- Relevant Ministry Experience



9.9 M.Div. Graduation Requirements



The following requirements must be completed to earn the Master of Divinity degree:

1. Complete 86 credit hours required by the M.Div. program with a minimum cumulative grade point average of 2.5. A maximum of 40 percent of course work may be completed through appropriate transfer credits that correspond to courses in the FBS established curriculum.
2. Complete the required three-year CPT experience (unless there has been a special exemption granted as in the previous “Special Student Situations” in section 9.6).
3. Consistently exemplify the character requirements outlined in 1 Tim. 3 that are essential to effective service in Christian ministry.

10.0 M. A. in Biblical Counseling

Overview

The Master of Arts in Biblical Counseling is ideal for those wishing to enhance their counseling knowledge and skills.

The MABC provides advanced educational credentials for those seeking service in counseling and discipleship ministries within the church. The MABC is a great compliment to those with advanced theological degrees. For example, those with advanced theological degrees may not feel properly equipped to counsel the varied problems of their church members and the MABC equips students for these ministry opportunities.

While this training is intensely practical and effective, the MABC program is not designed to lead students toward a counseling licensure within their state.

Mission Statement



The Master of Arts in Biblical Counseling is a graduate-level program designed to equip pastors, missionaries, and lay men and women as biblical counselors in order to serve those in need within the student's ministry community. Excellence in biblical education and effective ministry is accomplished through biblical theological understanding in counseling matters, personal growth, and practical counseling experience

In dependence upon God, and with the diligence of students and faculty, graduates of the Master of Arts in Biblical Counseling at Faith Bible Seminary will achieve:

Program Objectives

1.0 Understanding the Sufficient Scriptures as evidenced by:

- 1.1. The ability to articulate a definition of biblical counseling as derived from the doctrines of progressive sanctification, justification, and the sufficiency of Scripture.
- 1.2. An ability to articulate the gospel in its most essential form and use the truths of the gospel to produce biblically sound counsel.
- 1.3. An ability to effectively articulate the biblical change process using relevant scriptures.

2.0 Enhanced Academic Ability as evidence by:

- 2.1. A growing ability to responsibly engage in scholarly discourse on issues in counseling.
- 2.2. Students will demonstrate a commitment to grow in understanding of biblical sanctification through the interpretation and exegesis of God's Word.

3.0 Spiritual Growth as evidenced by:

- 3.1. Students will demonstrate being a humble disciple of Christ and growing in obedience to his commands through prayer and discipleship in class time and counseling others.
- 3.2. Students will demonstrate a growing dependence on and submission to the Holy Spirit as is evidenced by praying for classmates and counseling others.

4.0 Valuing Relationships as evidenced by:

- 4.1. A commitment to caring and praying for the physical and spiritual needs of one another during the seminary experience
- 4.2. Students will demonstrate an ability to minister the Word through counseling others and study of applying God's word to specific counseling scenarios (anger, depressions, etc.).

5.0 Preparation for Service as evidenced by:

- 5.1. Students will demonstrate the growing ability to minister to hurting people using the truth of Scripture in supervised counseling.
- 5.2. Students will demonstrate a commitment to train others in biblical counseling as evidenced in their participation in a counseling ministry.
- 5.3. Students will demonstrate a growing ability to minister effectively in a church even when the individual is not a formal part of the leadership team through their thesis project.



10.1 Admissions

Application Procedure

Applicants must possess an earned bachelor's degree (there is no specific field required) or its equivalent from an accredited college or university, with a minimum grade point average (GPA) of 3.00 (on a 4.0 scale). If you do not have a bachelor's degree, please see the No Bachelors Special Requirements section below.

Application Requirements

- [Complete an online application](#)
- Submit a personal testimony
- Submit your spouse's personal testimony (if applicable)
- Submit three letters of reference from those who can speak to your spiritual life, including, if possible, your pastor
- Submit the transcripts of the school where you earned your bachelor's degree (if applicable)
- Participate in a short video meeting with an FBS admissions representative for additional questions
- If you reside in a country where English is not the primary language, you will be required to provide FBS with a TOEFL score.

When the above requirements are met, the MABC chair will review the application and make an admissions decision. Once the chair has decided, the applicant will be notified via email in two to four weeks.

Applicants to FBS must complete basic biblical counseling training (BCTC, ACBC, etc.) either prior to or within the first year of enrollment.

Student Requirements

There are three basic expectations that FBS has for all students desiring to enter the MABC program.

1. Maintain a strong Christian testimony. Each FBS student is expected to maintain a sound Christian testimony throughout his or her time as a student.
2. Have current technology for learning in a digital age. Since the delivery system (section 10.4) of this program uses current technology, it is strongly encouraged that each FBS student have a laptop no more than 4 years old and capable of wireless internet.
3. Ensure they are able and willing to invest appropriate time in their education. Educational endeavors are contracts between students and professors. It is only when both parties do their respective jobs that the education is effective. Thus, it is expected that every student will evaluate his or her overall life commitments and only sign up for courses that he or she will be able to complete. We understand that challenges in life sometimes change, but we will expect students to have done their best to make appropriate provisions for their course work. In addition, we expect students to do their best work not for a grade, but for the Lord.

No Bachelors Special Requirements

FBS allows 10% of its total student body to participate in the MABC program without holding a bachelor's degree. If the student does not hold a bachelor's degree extra consideration will be given to the potential student's ministry experience.

Students without any bachelor's credits must complete the application process minus sending FBS their transcripts.

When a student not holding a bachelor's degree completes the MABC program after having been accepted for admission, they will earn a Master of Art in Biblical Counseling. In addition to the normal requirements, students with no bachelor's degree will be reviewed on the below criteria,

- Relevant Non-Degree Training
- Relevant Ministry Experience

Application Deadlines

The application deadline for all prospective MABC students will be 30 days before the beginning of the semester in which they would like to enroll.

10.2 MABC Graduation Requirements



The following requirements must be completed to earn the Master of Arts in Biblical Counseling degree:

1. Complete thirty-six credit hours of course work required by the MABC program with a minimum cumulative grade point average of 2.5. A maximum of 40% of course work may be completed through appropriate transfer credits that correspond to courses in the FBS established curriculum.
2. Complete 30 hours of supervised counseling
3. Complete one of FBS concentrations
4. Consistently exemplify appropriate godly character requirements outlined in the Scriptures so that one's participation in ministry cannot be questioned nor would the cause of Christ be hindered.

10.3 MABC Curriculum

The curriculum is divided into three parts. The first part, the core courses, is required for all other courses in the program. These courses present the material necessary to develop the proper foundation for biblical counseling. The second part of the curriculum contains courses related specifically to counseling practice. Each course will discuss how various counseling problems and situations should be addressed from the Word of God. The third and final portion of the curriculum requires students to demonstrate counseling competence by applying what they have learned to actual counselees. These courses are designed to facilitate supervised practice of counseling based on the foundation built in the earlier courses.

Counseling Foundations (15 hours)

BC 505	Introduction to Biblical Counseling	Introduces the concept of biblical counseling and distinguishes biblical counseling from other types of counseling approaches and explains the basic tenets of biblical counseling and requirements in order to be a biblical counselor.
BC 506	Principles of Bible Study	An explanation of the plot line of the Bible, crucial principles needed to interpret the Bible accurately, and how Bible study principles must be used to counsel with excellence.
BC 507	Theology of Biblical Counseling	Evaluates theological concerns such as progressive sanctification, the Bible's view of man/sin/fall, the importance of Christ (and the believers' union with Christ), the church, and the role of the Holy Spirit with their impact on counseling philosophy.
BC 508	Methods of Biblical Change	Provides a detailed explanation of the heart, helping students explain the process of biblical change as well as helping the student identify and facilitate biblical change in the counselee.

BC 509	Spiritual Formation and Self-Counsel	Helps students develop a more meaningful relationship to God and focuses specifically on applying the Word of God to areas of difficulty in the lives of the students.
--------	--------------------------------------	--

Counseling Theory (12 hours)

BC 510	Common Counseling Issues I	A careful examination of common counseling problems such as anger, worry, fear, or depression showing students how to discern the ways these attitudes are expressed and how to help the counselee respond biblically.
BC 511	Common Counseling Issues II (Prerequisites: BC505, BC506, BC509)	This course addresses the following counseling issues: eating disorders, adult survivors of childhood sexual abuse, and aging.
BC 512	Marriage and Family Counseling (Prerequisites: BC505, BC507, BC509)	An examination of family problems including marriage, parenting, financial issues, and pre-marital counseling.
BC 513	Advanced Counseling Issues (Prerequisites: BC505, BC506, BC507, BC508, BC509, BC510)	An examination of complex counseling subjects including those in crisis (e.g., suicide), those with mental health diagnoses, and those struggling with addictions (e.g., alcohol) as well as explaining some of the

		partnering opportunities between churches/counseling ministries and residential treatment facilities.
--	--	---

Counseling Practice (6 hours)

BC 611	Counseling Lab (Prerequisite: 27 Credit hours completed)	This course helps students learn counseling skills through the use of role-play, live counseling, and peer evaluation.
BC 701	Supervised Counseling (Prerequisite: 21 Credit hours completed)	Requires 30 hours of supervised counseling in order to demonstrate competence in a counseling setting.
BC 702	Written and Oral Exam (Prerequisite: BC701)	Student will complete the written and oral exams required to graduate from the MABC

Concentration Classes (6 hours)

Upon completion of BC702, MABC students will choose their desired concentration. Students must complete both classes in their chosen concentration to graduate.

Concentration classes cannot be combined, students must take both of the classes listed in their chosen concentration. For example, if a student chooses the Counseling Concentration, they must complete BC720 and BC721. A student will not graduation if they complete BC720 and another class that is not BC721

Counseling Concentration (6)

BC 720	Advanced Counseling Practice (50%)	This class seeks to improve the student's counseling competence.
BC 721	Advanced Counseling Practice (50%)	This class seeks to improve the student's counseling competence.

Training Concentration (6)

BC750	Equipping Biblical Counselors for the Church and Community	In this course, students work through a planning cycle within their ministry context, either by launching or improving a ministry in which they are serving. The course will examine the strengths, weaknesses, opportunities, and threats associated with their ministry. After completing this analysis, students will craft a strategic plan that addresses these issues they have
-------	--	---

		surveyed. The end-product of this class is a strategic plan that the students will use, in part, for BC 751.
BC751	Equipping Biblical Counselors for the Church and Community	In this course, students will be put into practice all that they have learned from the four-fold model for launching, leading, and overseeing the equipping of one-another ministers: 1.) Envisioning God's Ministry; 2.) Enlisting God's Ministers for Ministry; 3.) Equipping Godly Ministers for Ministry; and 4.) Empowering Godly Ministers for Ministry. Students will be equipped to equip God's people for the personal ministry of the Word in the church and to the community.

Thesis Concentration (6)

BC 790	Thesis Proposal Course	The class guides students through the proposal writing process with the goal that they will have an FBS approved proposal.
BC 800	Master's Thesis Project (Prerequisite: BC790)	In this course, using the proposal they created in BC790, students will

		complete their thesis under the guidance of a supervisor.
--	--	---

10.4 Delivery System

We believe that an educationally sound yet practical delivery system will provide the best mix of excellent educational training with the practical realities of life. The past thirty years have seen two major shifts in education delivery. First, institutions have been providing training through modules rather than residence-based weekly classes. Second, more and more education has been available on the Internet. Our delivery system incorporates the best ideas from our changing educational environment. As a result, we have developed an Internet-enhanced modular delivery method. This allows students to remain in their location while making several trips to Lafayette to do their training. Students should expect to complete approximately 40% of their educational requirement through internal residency/modular courses and the remaining 60% through online course work.

Types of Classes

Online Classes: Online classes are classes that will be only offered online. Online classes are 8 weeks long. However, students will have plenty of opportunities to participate in online discussions and live meetings.

Internal Residency Classes: Internal Residency classes will, in addition to online course work, have a weeklong module that will be, ideally, completed on FBS campus in Lafayette, IN. You can find out more about internal residency classes in the Class Scheduling section (section 10.5).

International Students are, for a \$200 fee, eligible to participate in internal residencies (with the exception of BC611) via conferencing technology.

8 Week Online Course Schedule

The winter and spring semesters in the MABC program are each 18 weeks long. This allows students to take two online classes per semester without overlap. This allows more flexibility in scheduling and completing assignments while allowing the student to complete their course work more quickly. Additionally, FBS will re-offer several of its online classes allowing even further flexibility.

Internet Enhanced Off-Campus Assignments

Because students in a modular class will only spend one week of the class in Lafayette, there must be assigned work both before and after the class. While much of this work will be done independently there is also great benefit in student interaction. Depending on the particular

professor, students will be expected to review the work of their fellow students and offer appropriate suggestions. This is to be done with kindness, but also with the intent of helping fellow classmates improve their work. This interaction will allow for tremendous learning opportunities off campus. Since FBS uses a web-based delivery system we will not be able to provide individual technical support for computer problems. We will, of course, ensure the website is functioning properly. Therefore, potential students are strongly encouraged to have a computer not more than four years old with access to a reliable broadband Internet service.

Independent Study Courses

Only two courses in the MABC curriculum are self-guided.

- **BC701:** This is a counseling practicum that must be done within the student's local ministry. We require at least 30 hours of documented counseling that can be evaluated by one of the FBS professors. Those students who desire to be ACBC certified will find this class to be an ideal opportunity to complete ACBC's supervision requirements [note: any fees paid to ACBC fellows for supervision are in addition to the costs associated with the course].
- **BC702:** This course is a prerequisite for BC800. In this course the student will complete their written and oral exams.

MABC Course Scheduling

Our modules will be offered every spring and winter. Since different courses will be offered during the three semesters, students can make fast progress on the degree. At the same time, the course offerings provide students a wide variety of choices to accommodate their schedules. It is best to plan your entire program from the beginning in order to accomplish your degree as quickly as possible and to ensure that course offerings and your proposed schedule match.

Spring Semester: Each spring there will be several classes available. Syllabi for the spring will be available no later than 2 weeks before the beginning of the semester. The six weeks of pre-course work will usually begin in the last week of April. Internal residency weeks will occur in June. Each spring course will usually end by the first week of August. It should be noted that the professor for each course will be given some level of flexibility in his or her course schedule. Please see the syllabi for details regarding your course requirements.

Winter Semester: Each winter there will be several MABC courses offered. Syllabi for the winter courses will be available no later than 2 weeks before the beginning of the semester. The

internal residency weeks will occur in January and the semester will usually conclude in the first week of March. As always, professors have some flexibility regarding the dates and assignments for the particular courses taught.

Housing and Meals

At the present time there are no housing facilities on the campus of Faith Bible Seminary for MABC students, however, several area hotels have made special pricing arrangements for seminary students.

During internal residencies, all meals are the responsibility of the student.



10.5 Class Scheduling

FBS will offer its courses based on the schedule posted below. The supervised counseling practicum course (BC701) should not be taken until the core courses and two of the 400-level courses have been taken.

We recommend that all students complete a tentative schedule that outlines their program from the beginning course all the way to their graduation. However, in order to facilitate our students, FBS will make exceptions on a case-by-case basis.

It should be noted that the seminary reserves the right to modify the schedule according to the needs and size of the student body. As a general rule, classes will not run unless ten students have registered for the course. On the other hand, the seminary plans to add additional courses if the class sizes become large.

Online Course Offerings

Due to the size of many classes, FBS only offers its classes once per academic year. The following classes will, for the time being, only be available in the noted semester.

Spring Courses

BC505 – Introduction to Biblical Counseling, Dr. Steve Viars

BC508 – Methods of Biblical Change, Dr. Brent Aucoin

Winter Courses

BC506 – Principles of Bible Study, Dr. Rob Green

BC507 – Theology of Biblical Counseling, Joshua Greiner

BC511 – Common Counseling Issues I, Dr. Amy Baker

Internal Residency Sample Class Schedule

Each residency course will have approximately 35 hours of instruction and directed assignments for each internal residency. The sample schedule below includes 31 hours of instruction plus four hours of directed evening assignments. While the professor of the course will set the schedule a sample residency week would be as follows:

Monday	1:00p – 5:00p	Course Homework (7:00p – 9:00p)
Tuesday	8:00a – 5:00p	Course Homework (7:00p – 9:00p)
Wednesday	8:00a– 5:00p	
Thursday	8:00a – 5:00p	
Friday	8:00a – 11:00a	

Sample Academic Calendar

FBS offers both modular and online classes. Module classes are eighteen weeks long and online classes are eight weeks long. Students have the advantage that they can take three classes per semester but can never do more than two concurrently. Below is a sample academic calendar for a winter and spring semester.

Winter Semester

11/4	11/11	11/18	11/25	12/2	12/9	12/16	12/23	12/30	1/06	1/13	1/20	1/27	2/03	2/10	2/17	2/24	3/02	3/09	3/16
BC506 Online			B				B												
BC511 Online			R				R												
			E				E				BC507 Online								
BC510 Module			A				A												
BC611 Module			K				K												

Spring Semester

4/20	4/27	5/4	5/11	5/18	5/25	6/1	6/8	6/15	6/22	6/29	7/6	7/13	7/20	7/27	8/3	8/10	8/17
BC505 Online																	
									BC508 Online								
BC509 Module																	
BC512 Module																	
BC513 Module																	

Sample Schedules

A variety of sample schedule are provided below to illustrate how a student completes the MABC within their desired timeframe. FBS recommends the four-year balanced schedule for most students. Students may contact FBS to create an academic schedule that works best for them.

A residency class is one that has one week, out of fifteen, in Lafayette, Indiana. All students, regardless of the pace at which they choose to complete the program will need to be in Indiana for five separate weeks throughout the course of their MABC program.

In the pages below, you will see three options for completing the MABC program.

Four Year: Balanced

The four-year balanced schedule requires only five trips to the Lafayette area while working at a part-time pace.

<u>Semester</u>	<u>Course</u>	<u>Couse Delivery</u>
Winter Year 1	BC506 Principles of Bible Study	Online
	BC510 Common Counseling Issues I	Residency
Spring Year 1	BC505 Introduction to Biblical Counseling	Online
	BC509 Spiritual Formation and Self-Counsel	Residency
Winter Year 2	BC507 Theology of Biblical Counseling	Online

	BC511 Common Counseling Issues II	Online
Spring Year 2	BC508 Methods of Biblical Change	Online
	BC512 Marriage and Family Counseling	Residency
Winter Year 3	BC611 Counseling Lab	Residency
	BC701 Supervised Counseling	Independent Study
Spring Year 3	BC513 Advanced Counseling Issues	Residency
	BC702 Oral and Written Exam	Independent Study
Winter Year 4	First Concentration Class	Online
Spring Year 4	Second Concentration Class	Online

Three Year: Accelerated

<u>Semester</u>	<u>Course</u>	<u>Couse Delivery</u>
Winter Year 1	BC506 Principles of Bible Study	Online
	BC507 Theology of Biblical Counseling	Online

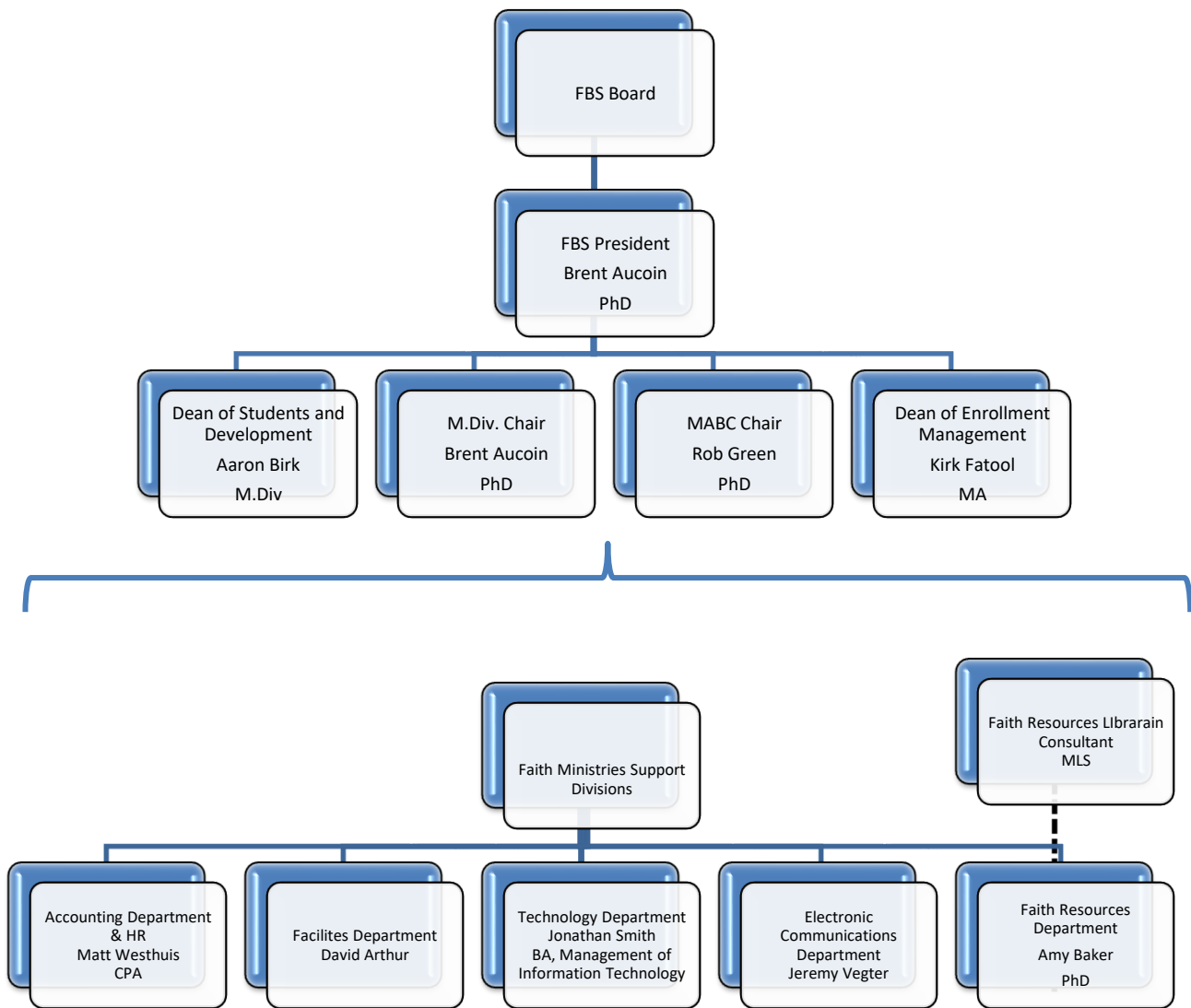
	BC510 Common Counseling Issues I	Residency
Spring Year 1	BC505 Introduction to Biblical Counseling	Online
	BC508 Methods of Biblical Change	Online
	BC509 Spiritual Formation and Self-Counsel	Residency
Winter Year 2	BC511 Common Counseling Issues II	Online
	BC611 Counseling Lab	Residency
Spring Year 2	BC512 Marriage and Family Counseling	Residency
	BC513 Advanced Counseling Issues	Residency
Winter Year 3	BC701 Supervised Counseling	Independent Study
	BC702 Oral and Written Exam	Independent Study
	First Concentration Class	Online
Spring Year 3	Second Concentration Class	Online

Two Year Very Accelerated

<u>Semester</u>	<u>Course</u>	<u>Couse Delivery</u>
Winter Year 1	BC506 Principles of Bible Study	Online
	BC507 Theology of Biblical Counseling	Online
	BC510 Common Counseling Issues I	Residency
	BC511 Common Counseling Issues II	Online
Spring Year 1	BC505 Introduction to Biblical Counseling	Online
	BC508 Methods of Biblical Change	Online
	BC509 Spiritual Formation and Self-Counsel	Residency
	BC512 Marriage and Family Counseling	Residency
Winter Year 2	BC611 Counseling Lab	Residency
	BC701 Supervised Counseling	Independent Study
	BC702 Oral and Written Exam	Independent Study
Spring Year 2	BC513 Advanced Counseling Issues	Residency

	First Concentration Class	Online
Winter Year 3	Second Concentration Class	Online

Appendix 1: Organizational Chart



Appendix 2: FBS Grievance Policy

Grievance, Complaint, and Suggestion Policy

FBS abides by federal, state, and local laws, statutes, and ordinances, and does not engage in any unlawful discrimination.

I. FBS Community (Staff, Faculty, and Students) Rights and Responsibilities

The following statements of rights and responsibilities are recognized by FBS:

- (1) All individuals have the same basic rights and are bound by the same responsibilities to respect the rights of others, as are all citizens. FBS considers individuals as students upon matriculation into an FBS program of study. FBS considers individuals faculty or staff when a written agreement of responsibilities exists between FBS and the individual.
- (2) All individuals in the United States have the rights of freedom of religion, freedom of speech, freedom of the press, freedom of peaceful assembly and association, freedom of political beliefs and freedom from personal force and violence, threats of violence and personal abuse.
- (3) US citizens have a right to have their educational history and performance, achievements and employment history considered fairly and free of prejudice for admission to, employment by and promotion within the seminary in accordance with the prohibitions against unlawful discrimination in the federal, state, and local laws.
- (4) All individuals have responsibilities and rights based on the nature of the educational process and requirements of the search for truth and its free presentation. These rights and responsibilities include the following:
 - a) Each has the freedom, dependent on level of competence to teach, learn, and conduct research and publish findings in the spirit of free inquiry.
 - b) Each has the right to pursue normal curricular and co-curricular activities.
 - c) Each shall understand that the FBS educational process will necessarily remain within the beliefs and requirements of the FBS Doctrinal Statement.

(5) All individuals have the right to expect that records maintained on or about them contain only information which is related to the educational or employment purposes or to the health and safety of the individual or others. Furthermore, it is assumed that each has the right to protection from unauthorized disclosure of confidential material contained in seminary records.

(6) All individuals have the right to reasonable and impartially applied rules, designed to reflect the educational purposes of the institution and to protect the safety of the campus.

(7) All individuals have the right to recourse if another member of the campus is negligent or irresponsible in the performance of his/her responsibilities, or if another member of the campus represents the work of others as his/her own.

(8) All individuals who hold opinions about basic policy matters of direct concern to them have the right to have them heard and considered at appropriate levels of the decision-making process. It should be noted that individuals who have a continuing public association with the institution and who have substantial influence have an especially strong obligation to maintain an environment supportive of the rights of others.

(9) Pastoral individuals have the responsibility to act in a manner that is consistent with 1 Timothy 3:1-7 and all have the responsibility to act consistent with biblical Christianity.

(10) All individuals have the responsibility to act in manners conducive to learning by: being prepared, prompt, attentive, and courteous in all academic settings (including classrooms, laboratories, libraries, advising centers, departmental and faculty offices, etc.), complying with all FBS standards, policies, procedures, rules, and requirements, and complying with requests made by FBS authorities.

II. Grievance among the FBS Community

(1) **Definition of Grievance:** A grievance is a complaint arising out of any alleged, unauthorized, and/or unjustified act or decision by an FBS student, faculty member, administrator, or staff personnel, which may adversely affect the status, rights, or privileges of a member of the FBS body.

(2) **Student Grievance Procedure:** Individuals should always strive to solve problems with others following the principles of problem solving set out in Matthew 18:15ff. Because FBS, however, is not a church, individuals, who, for whatever reason believe the Matthew 18:15ff process cannot fairly take place and/or they feel aggrieved in their relationship with FBS and/or with its policies and procedures, its practices and procedures, or its faculty, staff,

and/or others should submit their grievance in writing to either the M.Div. or MABC program chair or the FBS Registrar. A response to the grievance shall be made as quickly as possible. Should the student feel aggrieved with either of the M.Div. program chair, MABC program chair, or the FBS President, the student should submit the grievance to the FBS Registrar. The FBS Registrar will direct the student grievance to the appropriate party. In the handling of student grievances (which may include investigations of alleged wrong-doing or violation of the FBS Policies and Procedures) the FBS representative resolving the grievance may request input and participation from another program chair, the FBS President, the FBS Board, and/or FBS faculty and administration. See Section III below for additional details about the grievance process.

Decisions made and actions taken in resolving the grievance (“disciplinary actions”) shall be provided in writing, within ten business days, to the individual who had submitted the grievance.

Individuals sanctioned by disciplinary actions, either academic or administrative, can appeal their status with FBS by providing to the FBS Registrar a written appeal within ten working days of the receipt of the written disciplinary action. A decision on the appeal will be made by the FBS President. The decision made by the President shall be final and not subject to any further appeal.

All grievances submitted in writing to FBS will be kept on record electronically. All disciplinary actions taken to resolve a grievance will be kept on record electronically.

III. FBS Procedure

- (1) All individuals have the right to fair and equitable procedures which shall determine the validity of charges that they have violated seminary regulations.
- (2) All individuals have a right to expect that the procedures shall be structured to facilitate a reliable determination of the truth or falseness of the charges, provide a fundamental fairness to the parties, and be effective as an instrument for the maintenance of order.
- (3) In the event that reconciliation cannot be made following the guidelines set out in Matthew 18 and after a formal grievance has been submitted. An FBS representative or appointed representative from Faith Church will interview the parties involved, including any witnesses, to ascertain the relevant facts of the grievance. At that time, the FBS representative will meet with the parties involved to present the evidence that was found. The parties involved will have an opportunity to make a final case to the representative before

the final report is turned over to the FBS Registrar. In the case that the grievance involves the FBS Registrar, evidence will be turned over to the FBS President. After reviewing the final report, the FBS President or FBS Registrar will determine the appropriate course of action.

(4) All individuals have the right to know in advance the range of sanctions for violations of FBS standards, policies, procedures, rules, and requirements, or failing to comply with requests made by FBS authorities.

(5) Any individual charged or convicted of violations of a general law, in addition to any sentence, fine, or other punishment from secular authorities, may be subject to seminary sanctions for the same conduct, in accordance with seminary policies and procedures, when the conduct is in violation of FBS standards, policies, procedures, rules and requirements, or failing to comply with requests made by FBS authorities.

(6) Faith Bible Seminary does not represent accusing faculty or staff members or students but provides a process for fact finding and fair decision making.

(7) FBS will do its best to ensure that those investigating the case are not directly involved and have no conflict of interest in the grievance. The goal of this representative will be to turn over their impartial findings to the FBS President or FBS Registrar. The accused will know who their accuser is. In most cases, the parties will be given the opportunity to settle their disagreement without the intervention of FBS (following Matthew 18).

(8) Faith Bible Seminary reserves the right to hold individuals accountable for certain types of off-campus behavior. Rules of conduct and living set forth in the Bible, and in the written FBS standards, policies, procedures, and rules, shall be considered binding upon FBS members at all times, regardless of whether the conduct is on-campus or off-campus.

(9) Disciplinary action may result if an individual's behavior compromises the educational atmosphere or mission of the institution. After following the process above, the FBS president or FBS Registrar will determine appropriate course of action. In cases where local, state, or federal law has been violated law authorities may be notified.

IV. Complaint Arising from Perceived Violation of Accreditation Standards

If an individual should become aware of a violation of an ABHE accreditation standard. The individual should address the concern in writing to the President of FBS. The individual may also address the concern in writing to the Association for Biblical Higher Education (ABHE):

Association for Biblical Higher Education
5850 T.G. Lee Blvd,
Suite #130 Orlando, FL 32822
407.207.0808
www.abhe.org

V. General Suggestions

FBS welcomes input to improve its structure, educational methods, institutional procedures, etc. If an individual has a suggestion for improvement, please put the suggestion in writing and address it to the appropriate program director (M.Div./MABC), president, or registrar.

Accreditation Status

Faith Bible Seminary is accredited with the Association for Biblical Higher Education Commission on Accreditation. FBS received initial accreditation on February 20, 2019 and will reaffirm its accreditation in 2024.